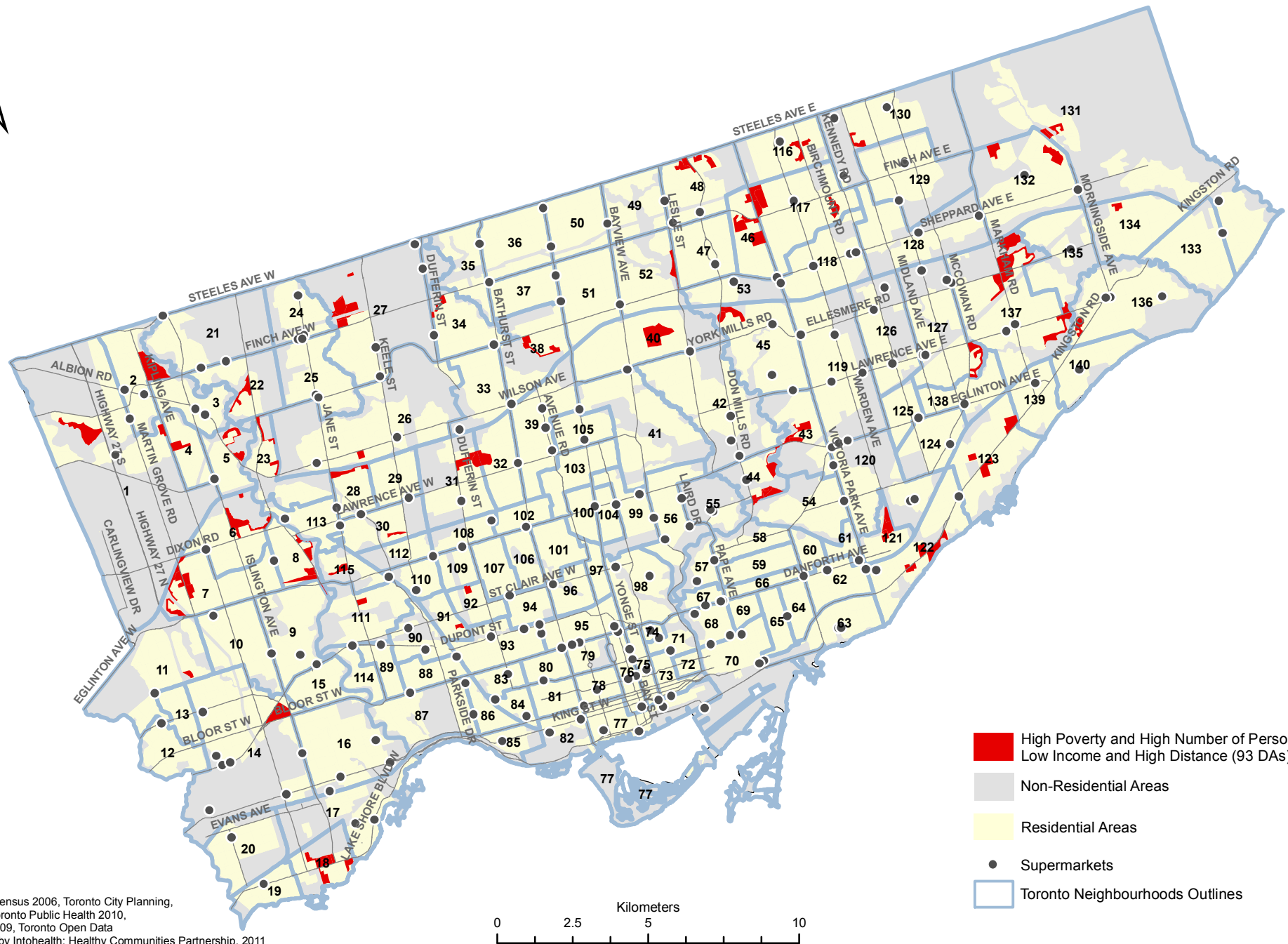
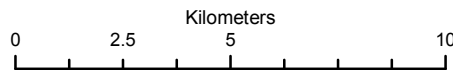


# Distance to Nearest Supermarket - Priority Areas



Canada Census 2006, Toronto City Planning,  
THEIS -Toronto Public Health 2010,  
CRICH 2009, Toronto Open Data  
Prepared by Intohealth: Healthy Communities Partnership, 2011



- High Poverty and High Number of Persons in Low Income and High Distance (93 DAs)
- Non-Residential Areas
- Residential Areas
- Supermarkets
- Toronto Neighbourhoods Outlines

**Notes:** High poverty was identified by DAs of 25% or more low income prevalence before tax.

High distance: Distance to nearest supermarket >1500m

High number of persons in low income was identified by DAs having 150 or more persons in low income